



ELGRAND



# POWERFUL PROFILE

ELGRAND features the blending of LED Signature headlights and a thick front mask and grille into one form -a hallmark of the original ELGRAND. While a three-dimensional body side panel with dynamic lines flowing from the front and leading all the way down the sides imparts a powerful profile.





# THE MOST REGAL LUXURY MOBILE SUITE

Majestic and sleek, the new-generation ELGRAND HIGHWAY STAR cuts a powerful profile of dynamism and prestige, imparting a strong luxury presence. With its 1,815mm height, the ELGRAND has no problems entering private car parks and shopping mall car parks that come with height restrictions.



AIR CONDITIONER



SUNROOF



OTTOMAN SEAT



COMBIMETER



SLIDE FUNCTION

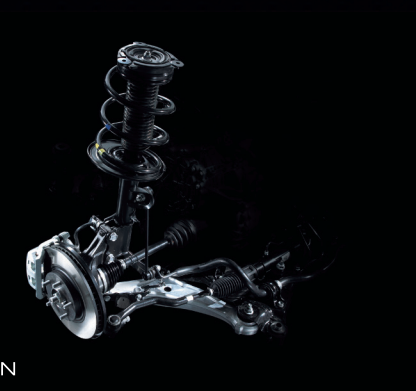
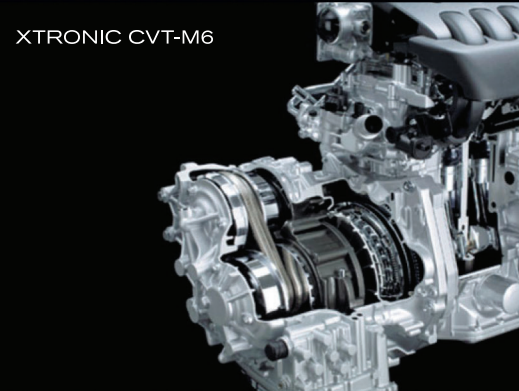


SLIDING DOOR



## EXPECT TO BE SURPRISE

Luxuriate in stylish grandeur of ELGRAND's high quality interior space and let the plush seats cradle you and your passengers in supreme comfort. Using the latest technology, a 3-dimensional plush seat design offers support for the entire body, while helping to maintain a relaxed and stress-free posture.



VQ35DE ENGINE

Newly-designed Strut Type Suspension

High Rigidity Steering Column



## NEW PLATFORM

The ELGRAND's all-new platform gives it a low center of gravity, comfortable seating and riding comfort for both driver and passengers. In addition, you can expect quiet operation when driving, not only due to the new platform but also with significantly improved surface rigidity, vibration-resistant floor and bead-shaped sound dampening flooring that's utilized.



Nissan's concept of  
"the vehicle that helps protect people"

## AROUND VIEW MONITOR

The full use of ultrasonic sonar and image analysis technology of Nissan's own. When you make a mistake pedaling by mistake by any chance, you can further enhance the security of drivers in support of conflict prevention.

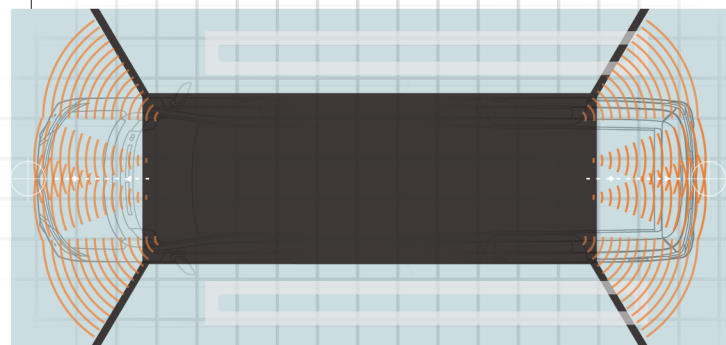
Even if I stepped on the accelerator by mistake by any chance in the situation should step on the brake, Car itself will detect the erroneous operation, I will assist the anti-collision.

Is not only obstacle detection function by sonar, detect the parking space in the image analysis technology of "Around View Monitor".

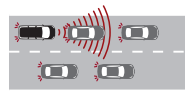
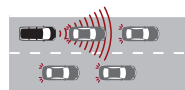
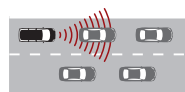
Suppresses the accelerated even though the driver is depressing the accelerator pedal by mistake by any chance. In addition, the brake is activated automatically if there is a possibility that detects obstacles such as walls in sonar, colliding with the obstacle.

Make the best decision car will detect the places and situations, preventing a collision.

※ sonar four before, collision prevention assist mistake stepping (parking space detection function) equipped car, it becomes possible to increase the one behind 4, to detect more widely.



### Intelligent cruise control



### active AFS



Active AFS equipped car

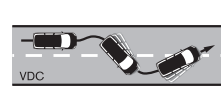


Active AFS non-equipped car

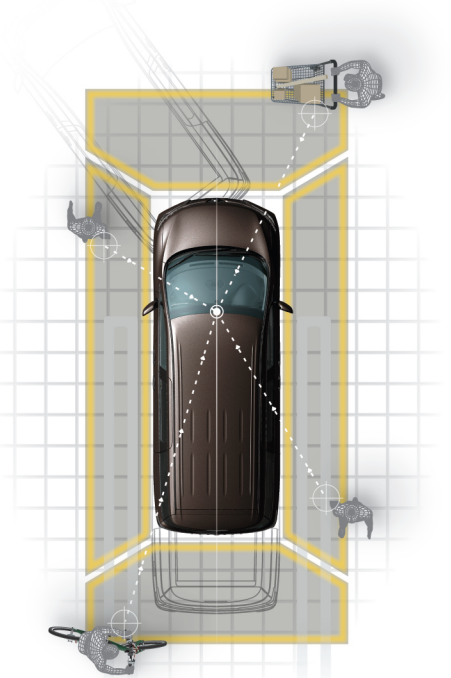
### On the slippery road



VDC



VDC



\* Complete stop vehicle at the time of error (about 8km / h or less), suppression of the parking frame detected (in-house check of November 2012) the world's first two-pedal depressed.

\* The ability to inform the driver to detect the moving objects around the vehicle using three cameras 4 (in-house check November 10, 2011) the world's first.

\* Etc. 4 intelligent cruise control set at a factory option (only 3.5L car). And VIP 350Highway STAR Premium as standard.

\* Note: The options in the set collision prevention assist mistake stomping and 5 (such as parking space detection function).



※ front grille of intelligent cruise control equipped car is shaped like a left.

\* 1 safety equipment is intended to assist in the safe operation of the driver, it is not a thing to avoid collisions in every situation. There is a limit to the capacity of the system, that it may not work, such as by road conditions and weather, driving to suit the road conditions and weather, check the vehicles and pedestrians around, the driver ensure sufficient distance between vehicles, please try and precise driving operation, the safe driving.

## FORWARD THINKING SURPASSES PEOPLE IN EVERY INTELLECTUAL DIMENSION

### Major Specifications

#### Engine

Model	VQ35DE	
Type	V-formation, 6-cylinder, 24-valve, DOHC, CVTC	
Displacement	cc	3498
Bore x stroke	mm	95.5 x 81.4
Max. power	hp / rpm	276 / 6,400
Max. torque	Nm / rpm	344 / 4,400
Fuel Consumption	km / L	9.4 (10,15 mode)
Compression ratio	10.3:1	
Fuel system	ECCS, electronic fuel injection control	

#### Transmission

Type	Advanced XTRONIC CVT M-6
------	--------------------------

#### Steering/Suspension/Brakes

Steering	Power-assisted rack-and-pinion gear	
Min. turning radius	m	5.7
Suspension	Front	Independent MacPherson struts
	Rear	Independent Multi-link
Brakes	System	Power assisted, Anti-lock Braking System (ABS), Electronic Brake force Distribution (EBD), Brake Assist (BA)
	Front	Ventilated disc
	Rear	Ventilated disc

#### Wheels/Tires

Wheels	18 x 7 1/2 J Aluminium alloy	
Tires	225 / 55 / R18	

#### Dimensions/Weights

Overall length	mm	4,915	
Overall width	mm	1,850	
Overall height	mm	1,815	
Wheelbase	mm	3,000	
	Trend		
	Front	mm	1,600
	Rear	mm	1,600
Min. ground clearnace	mm	150	
Curb weight	kg	2,050	

#### Capacities

Seating	persons	7
Fuel tank	L	73

#### Colors



Imperial Amber

Phantom Black



Metal Grey

Brilliant Silver

Brilliant White pearl

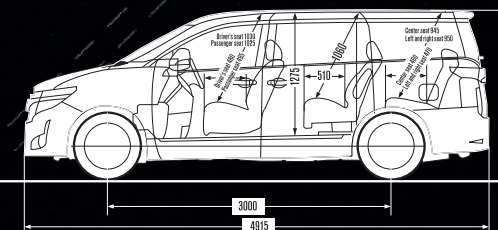
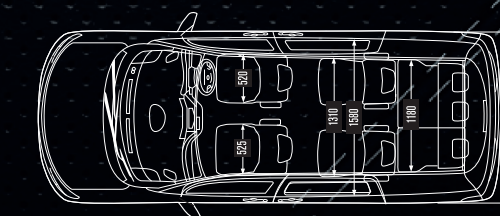
#### Interior Material



Black Metallic Leather Interior

Gradient Brown Maple Finisher

#### Dimensions



Nissan Motor co., Ltd. reserves the right to make any changes without notice concerning colors, equipment or specifications detailed in this brochure, or to discontinue individual models. The colors of vehicles delivered may differ slightly from those in this brochure. The specification vary for different countries depending on local market conditions. Please consult your local dealer to ensure that the vehicle delivered accords with your expectations



## **BOUSTEAD SDN BHD**

Lot No.24 & 29, Beribi Industrial Complex II,  
Jalan Gadong BE1118, Brunei Darussalam.

**Tel** +673 243 1333 **Fax** +673 245 0459

Lot 8989, Units 1-4, Block A, Jalan Pandan 7,  
Kg.Pandan KA1931, Kuala Belait, Brunei Darussalam.

**Tel** +673 333 4284 / 333 7384 **Fax** +673 333 4286

 **Nissan Brunei**

 **Nissan\_Brunei**

[www.nissan.com.bn](http://www.nissan.com.bn)