



2020  
URVAN WIDE BODY







DOCUMENT TRAY



BOTTLE TRAY



GLOVE BOX



AUTO AIR CONDITIONER

CUSHION WIDTH  
 & COMPARTMENT  
**905MM**  
 DESIGNED TO MAXIMIZE  
 COMFORT, ESPECIALLY  
 DURING LONG-HAUL  
 JOURNEY



MULTI FUNCTION DISPLAY PROVIDES THE DRIVER WITH REAL-TIME FUEL EFFICIENCY INFORMATION, INDICATING SHIFT TIMING, AS WELL AS ODOMETER AND TRIP METER DATA.



COOLER VENT TRAY

**ENGINEERED WITH THE DRIVERS IN MIND  
NV350'S CABIN WAS CONSTRUCTED FOR  
ROOMINESS AND EASE OF USE.**

# NEXT LEVEL COMFORT AND LUXURY

Imagine something as good as it looks on the outside- something so grand and refined that it keeps surprising you. Introducing the Nissan Urvan NV350 wide petrol version. With its elegant design and Convenience - focused features, it makes for a smooth ride. Sit at ease with a luxurious cabin that fits All your needs - a push 9 seaters capacity, spacious legroom, high headroom and a wider aisle.

## HALOGEN HEADLAMPS



## 3 POINT EMERGENCY LOCKING RETRACTOR

Designed to automatically  
Lock in place when a  
passenger moves forward  
At a normal high speed



2.5-LITER DOHC GASOLINE ENGINE 16 VALVE

## QR25DE

Nissan's high-performance, in-line 4-cylinder QR25DE Gasoline engine delivers powerful acceleration, even while carrying heavy loads. Quieter than ever, this engine also boasts class-leading fuel efficiency, and exceptional environmentally friendly performance.

SLIDING DOOR  
OPENING

## 1580MM

WIDE OPENING FOR SMOOTH  
INGRESS AND EGRESS



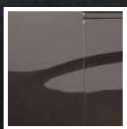
LED TAIL LIGHT



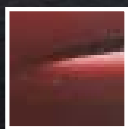


BUSINESS AND PLEASURE

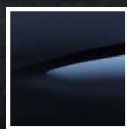
## COLOUR CHART



DARK BROWN PEARL  
(CAS)



RED PEARL METALLIC  
(NBB)



DARK BLUE PEARL  
(BW5)



SILVER METALLIC  
(K23)



WHITE SOLID  
(QM1)



BLACK SOLID  
(KH3)



GRAY GUNMETAL  
(K51)

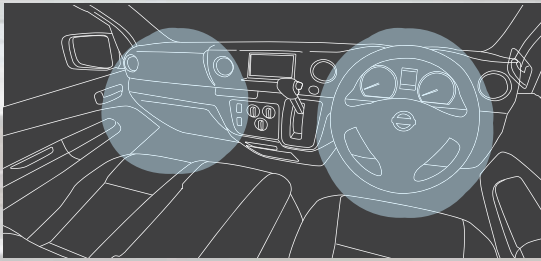
# NISSAN INTELLIGENT MOBILITY

Nissan's concept of "the vehicle that helps protect people."

## SAFETY SHIELD

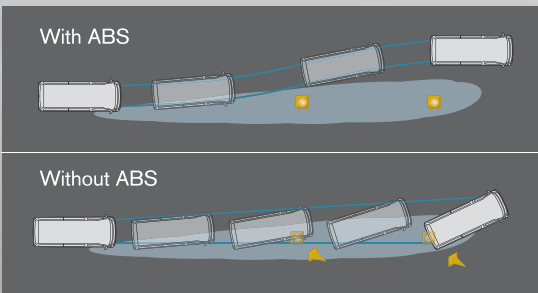


SRS\* airbags for the driver and front seat passenger help to reduce the risk of injury resulting from impact.



### ABS and Brake Assist

Nissan's Anti-lock Braking System (ABS) helps prevent skidding during emergency braking. Brake Assist (BA) enhances full braking performance in emergency situations.



## SPECIFICATION NV350 WIDE PETROL VERSION

Engine		
Code	QR25DE	
Type	In-line 4-cylinder DOHC 16 valves	
Displacement	cc	2,488
Bore x Stroke	mm	89.0 x 100.0
Max. power	kW(PS) / rpm	108 (147) / 5,600
Max. torque	Nm(kg-m) / rpm	213 (21.7) / 4,400
Compression ratio	9.5:1	
Fuel system	EGI (ECCS)	
Transmission		
Type	5AT	
Gears	1st	3.841
	2nd	2.352
	3rd	1.529
	4th	1.000
	5th	0.839
	Reverse	2.764
	Final gear ratio	3.700
Steering/Suspension/Brakes		
Steering	Rack & Pinion	
Min. turning radius	(curb to curb) m	6.0
Suspension	Front	Double Wishbone Torsion Bar Type
	Rear	Rigid Axle with Leaf Spring
Brake	System	4-wheel Anti-lock Braking System (ABS) Electronic Brake Force Distribution (EBD) and Brake Assist (BA)
	Front	Ventilated Disc
	Rear	Drum Brake
Tires/ Wheels		
Wheels	15 x 5.5 JJ	
Tires	195/80R15	
Dimensions/ Weights		
Overall length	mm	5230
Overall width	mm	1880
Overall height	mm	2285
Wheelbase	mm	2940
Tread	Front mm	1660
	Rear mm	1635
Min. ground clearance	mm	170
Curb weight	kg	1150
Gross vehicle weight	kg	3155
Capacity		
Seating	persons	9
Fuel Tank	L	65



BSB

Tel: +673-243 1333 Fax: +673-242 0459

KB Branch

Tel: +673-333 4284 Fax: +673-333 4286

